

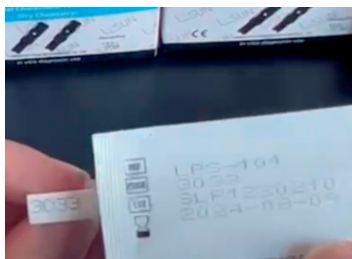
USE YOUR NEW Blood Lipid Analysis METER CORRECTLY TO ENSURE ACCURACY:

1



Prepare the test

2



Check the code No. same as the test strip

3



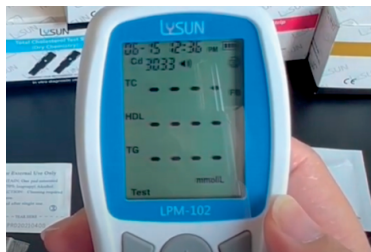
Insert the code chip

4



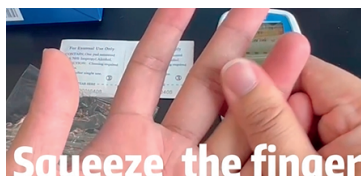
Put test strip into slot

5



Top left corner of the screen will blink, meter is waiting for add blood sample

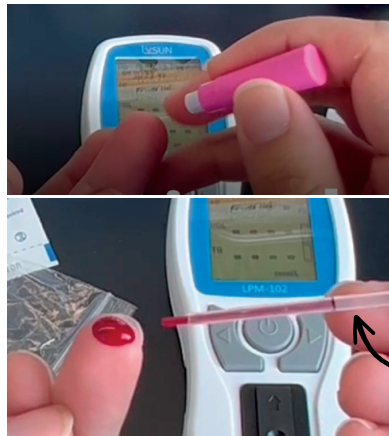
6



Squeeze the finger

Use the alcohol wipe clean finger, squeeze the finger

7



Press lancet on finger, make sure blood reach black line of capillary

8



Use the 35ul/10ul capillary transfer tube collect enough blood, squeeze the tube into the test strip blood slot

9



After adding the sample in 120 seconds, the screen will show the result

Please note you may get diferent safty lancets to collect blood ,but the test steps is same .

TIPS

Note: If the blood applied to the Specimen Application Area is not enough, do not add more blood to the Test strip. Instead, retest with a new strip.it may show LO or a lower result.

3 in 1 function 1 function strips



The LED lamp test area is contaminated,it may show ERR code .

(Use complimentary lens cleaning tissue)

Do not clean the LCD or sensor area with water. Lightly wipe with a soft, clean, dry cloth.

How to collect enough blood samples ,please check youtube vidoe as below .



Scan the code to watch the operation video



If you get a lower test result ? Highly possible becuse of not enough blood .Please noted blood need to reach the black line of capillary.

3 in 1 test strips need 35ul blood
1 function strips need 10 ul blood

