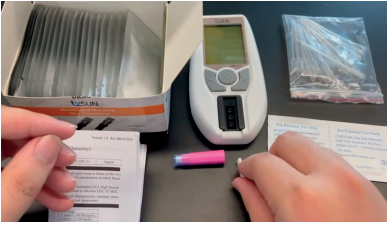


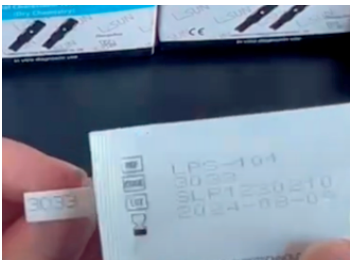
USE YOUR NEW Blood Lipid Analysis METER CORRECTLY TO ENSURE ACCURACY:

1



Prepare the test

2



Check the code No. same as the test strip

3



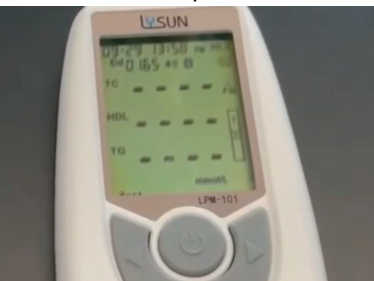
Insert the code chip

4



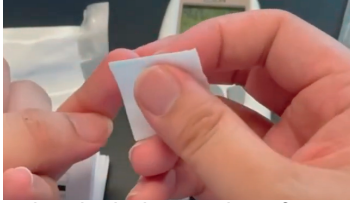
Put test strip into slot

5



Top left corner of the screen will blink, meter is waiting for add blood sample

6



Use the alcohol wipe clean finger, squeeze the finger

7



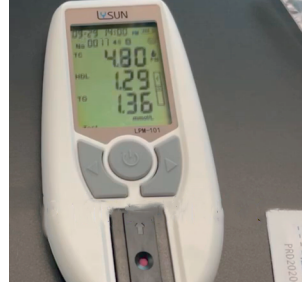
Press lancet on finger, make sure blood reach black line of capillary

8



Use the 35ul/10ul capillary transfer tube collect enough blood, squeeze the tube into the test strip blood slot

9



After adding the sample in 120 seconds, the screen will show the result

Please note you may get diferent safty lancets to collect blood ,but the test steps is same .

? How do I know if my cholesterol is normal?

Healthy Blood Cholesterol Levels, by Age and Sex				
Demographic	Total Cholesterol	Non-HDL	LDL	HDL
Age 19 or younger	Less than 170 mg/dL	Less than 120 mg/dL	Less than 100 mg/dL	More than 45 mg/dL
Men age 20 or older	125 to 200 mg/dL	Less than 130 mg/dL	Less than 100 mg/dL	40 mg/dL or higher
Women age 20 or older	125 to 200 mg/dL	Less than 130 mg/dL	Less than 100 mg/dL	50 mg/dL or higher

? Why my meter LPM-101 can't power on?

Recharge battery is out of power ,please recharge by USB cable .After recharge please reset the meter .In order to protect battery lifetime from long time no use, so we design this function to reset the machine, you can just use any needle or any pin to Insert one time.Then you can power on it work well.

? What causes inaccurate Blood Lipid measurements?



Scan code to learn more



Help Center (FAQ)



Contact us
Customer service: dylan@medasia.store
General inquiry : info@medasia.store

facebook



www.medasia.store

File Download Center

